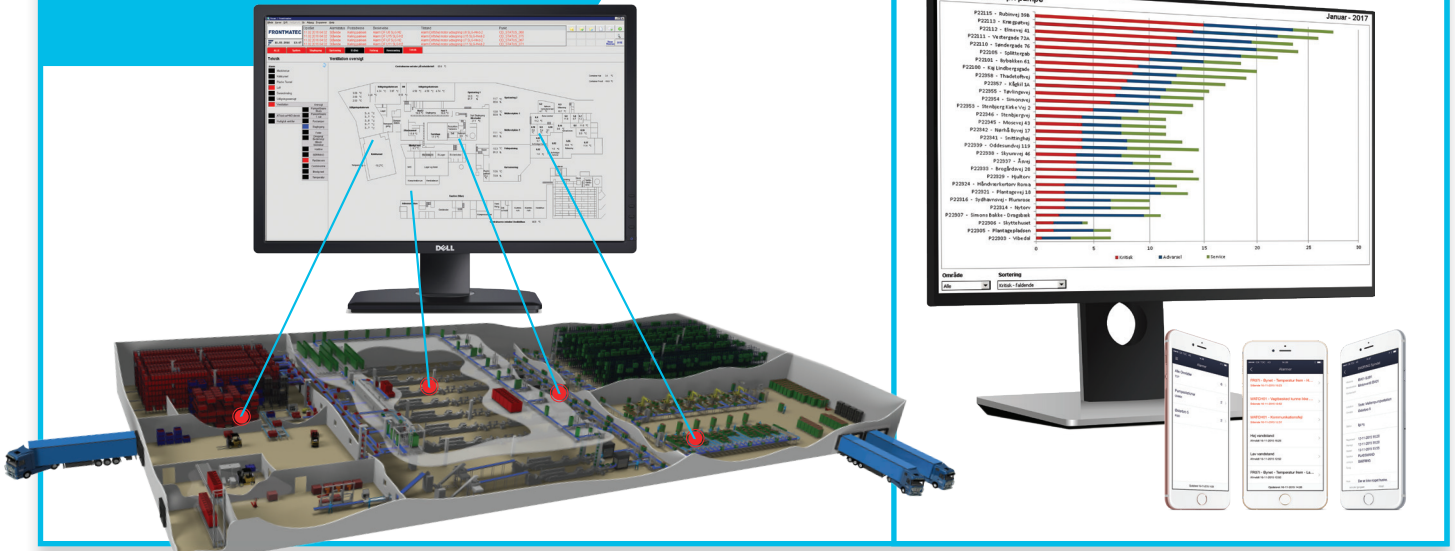


SCADA S2



Increase up-time with S2

Fast problem solving

Production stops are expensive, but with S2 you have the tool which immediately will locate the breakdown or fault and tell you what, where and why, so you are able to react fast. As a special feature Frontmatec has developed several apps which makes it possible to follow and operate S2 from your Smart phone. It is possible to tailor S2 to your needs and add features such an SMS notice in case of breakdowns.

Preventive maintenance

Is crucial to overall effectiveness and S2's trouble-shooting tool points out what issues you should solve to improve your up time. Also S2 will remind you of maintenance from the exact wear and tear part to the agreed maintenance tasks you have in a service contract with Frontmatec.

Report and statistics

With S2 you are guaranteed a sublime report and statistic module that amongst others can show you where you have the possibility to improve your production. You can retrieve data in Excel, which gives you a wealth of advanced reporting features combined with graphical illustrations.

Training

We can offer you a variation of courses that will strengthen your skills and secure that you get the utmost out of your SCADA S2 system.

Value for you!

- Increased profit
- Fast troubleshooting
- Preventive maintenance
- SMS alarm setup
- Export to date Excel
- Save labor costs
- Monitor quality control
- Prevent down time
- Cost efficiency
- Analysis, statistics and KPI reports

Do not miss the video on www.frontmatec.com/scada and do not hesitate to contact us for more information.

Contact

Central/Eastern Europe
Phone: +49 252 185 070
E-mail: as.ce@frontmatec.com

Central/Eastern Europe, Poland
Phone: +48 227 345 551
E-mail: as.ce@frontmatec.com

Northern Europe
Phone: +45 36 999 099
E-mail: as.ne@frontmatec.com

Southern Europe
Phone: +34 932 64 38 00
E-mail: as.se@frontmatec.com

Russia
Phone: +7 495 424 9559
E-mail: as.ru@frontmatec.com

Western Europe
Phone: +31 886 294 000
E-mail: as.we@frontmatec.com